

Lumella Preeclampsia Single Test Kit contents:

- A. One (1) foil pouch containing one Test Cartridge and one desiccant
- B. One (1) capped vial containing sample buffer
- C. Two (2) blood collection micropipettes
- D. Two (2) transfer pipettes
- E. One (1) lancet
- F. One (1) alcohol swab
- G. One (1) bandage

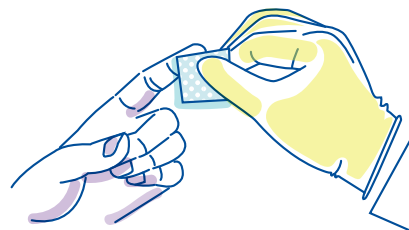
A

D

G

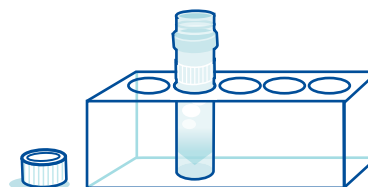
1

Clean finger with alcohol swab. Allow the finger to air dry.



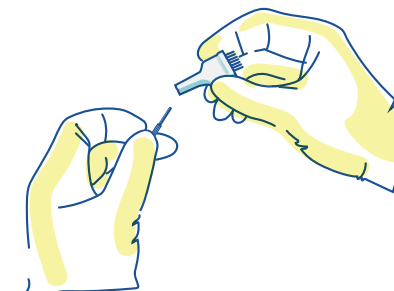
2

Open buffer vial and place in tube holder.



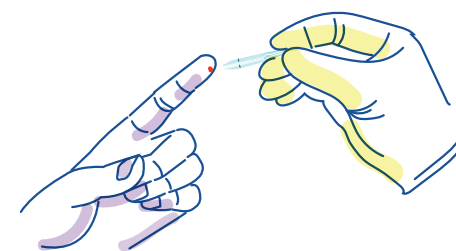
3

Twist off and remove bottom of lancet.



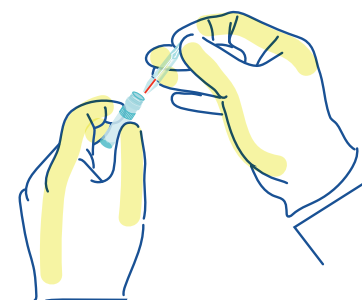
4

After lancing, gently touch micropipette to blood **without** squeezing bulb.



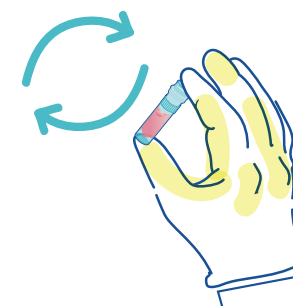
5

Insert the tip of the blood collection micropipette into the buffer. Expel blood by pressing bulb gently. Rinse 2X.



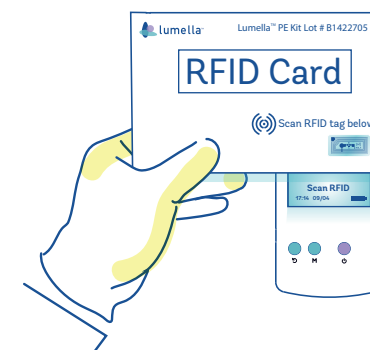
6

Re-cap and gently invert 8X. **DO NOT SHAKE.** Remove the cap and place the vial in the holder.



7

Turn on Reader and scan RFID tag as shown below. Hold the metallic tag over the Lumella logo at the top of the Reader.



8

TOO LITTLE
place back
onto blood to
complete
collection

9

JUST RIGHT

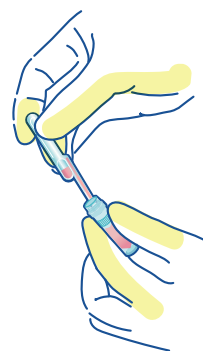
10

TOO MUCH
discard and
use new blood
collector

DO NOT WIPE THE TIP

9

Press the transfer pipette bulb completely and then immerse the tip into the buffer vial as far as it will go. Release the bulb to fill the pipette. Any excess sample will fall into the reservoir. Ensure there are no bubbles in the pipette.

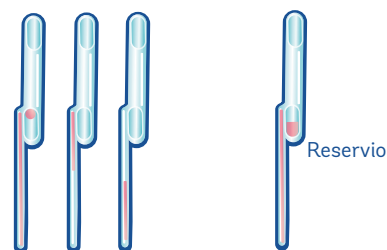


10

INCORRECT
OR INADEQUATE

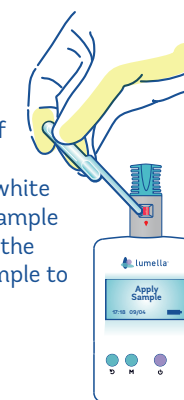
ACCEPTABLE

Reservoir



10

Touch the tip of the transfer pipette to the white square in the sample port and press the bulb to add sample to the cartridge.



11

Turn on the Bluetooth printer. Wait **10 minutes** for test results which will automatically print. Record results appropriately.

